

COMMERCIAL CONTRACT HOSPITALITY

Maxwell
EXPRESSIONS IN FABRIC

2017
COMMERCIAL



Table of Contents

The Studio Collection	2-4
Upholstery	5-9
Velvets	10-11
Vinyls	12
Drapery	13-14
Sheers	14
Coming Soon...	15-16

The Studio Collection

Studio Mayfair

Charmed By Tradition

In our eighth Studio collection we pay homage to the resurgence of traditional design, while keeping in mind our signature modern classic style. Fresh, yet dramatic color palettes show off a beautiful upholstery weight jacquard, which we have paired with small scale geometric chenilles and multicolored stripes. The introduction of a luxurious cut-velvet scroll adds an interesting tactile design element to the collection. This fabric is a striking way to add depth and dimension to any room setting.

All skus in "Studio Mayfair" pass 25,000 to 85,000 double rubs

Featured: Notting Hill 02, Charles 04, Sussex 102, Pippa 204, 205, 403



Featured: El Badi 401, Rabat 201, Fes 301, Menara 01, Rabat 402

Studio Marrakesh

Style Atlas

Our seventh collection in the Studio series offers high-wearing upholstery style inspired by the global diversity of exotic locales. Heavy-duty multi-colored chenilles in medium to small-scale geometrics are layered with complementing solids in palettes ranging from rich and spicy to cool and metallic, providing an option for any scheme.

All patterns pass 30,000-90,000 double rubs



Studio Cape Town

Global Cool

Studio Cape Town offers rustic, tribal looks expressed in a modern way. We have designed a unique mix of small-scale geometric designs using cozy chenille on naturally matte linen-like grounds. The palettes of warm tangerine, forest green and deep berry tones provide a fashion-forward yet earthy and natural look to achieve a refined global sophistication.

All patterns pass 35,000-195,000 double rubs

Featured: Tangle 405, Stellenbosch 605, Zig Zag 108



Featured: Fairfax 102, Marina 401, Hollywood 101, Venice 202

Studio LA

West Coast Chic

Studio LA is a heavy-duty upholstery collection of plush chenille. It offers a bold mix of contemporary geometric patterns, stylized florals and sophisticated stripes, setting the stage for trend-setting, easy-to-live with decor.

All patterns pass 30,000-200,000 double rubs



Studio Paris

Ooh La La!

An effortlessly stylish collection, Studio Paris is comprised of contemporary chenille patterns that work in combination to achieve a fresh and vibrant ambience. Sleek stripes compliment small-scale geometrics while a whimsical yet modern floral exudes a playfully chic and cool quality.

All patterns pass 45,000-105,000 double rubs



Featured: Rendezvous 03, Chanel 204, Seine 04



Featured: Radio City 01, Times Square 14, Rockefeller 101

Studio New York

Retro Revival

Studio New York is a sophisticated collection of geometric chenille patterns and textures in a complementing color palette designed to inspire a modern setting with a refined retro vibe. A washed finish results in a soft plush touch and feel while maintaining durability.

All patterns pass 40,000-200,000 double rubs



Upholstery

Weave Works III

The Natural Look

Our upholstery solids and textures line has a new hit: Weave Works III featuring pattern **Popular**, a 100% cotton slub with a soft, brushed hand and **Award**, a must-have linen-look. This collection is a true workhorse as both patterns are multi purpose, washable and suitable for commercial settings.

Pattern Award passes NFPA 701
Both patterns pass between 45,000 – 105,000 double rubs for heavy-duty upholstery and pass NFPA 260 Class I (UFAC) & CAL 117-2013

Featured: Award 29, 49, 68



Featured: Super Weave 02, 16, 46, 51, 55

Weave Works II

Linen Look

Super Weave is a modern square-weave construction with an enticing, structured surface texture and a supple hand. This pattern is perfect as either heavy-duty upholstery or for drapery treatments with a refined, linen-like effect. The 40+ colors on offer allow for diversity in application and setting.

"Super Weave" passes 75,000 double rubs



Curled Up IV

The Softer Side

Curled Up IV is a compilation of nine chenille patterns with a soft hand and understated surface interest. A vast palette of soft tints and tones is set off by a selection of fashion colors. This latest addition to the Curled Up series continues to offer an ultra-soft, residential hand and look that can cross over into commercial settings.

All patterns pass between 90,000 – 200,000 double rubs for heavy-duty upholstery

Featured: Certain 818, 867, Proud 803, 865, Bonus 862, Soul Train 827



Curled Up III

Soft Touch

Curled Up III is a compilation of two sumptuous chenille patterns in a wide array of hues. We heavily emphasize an on-trend palette of saturated brights while staying true to the importance of neutrals. This one-stop collection is a perfect go-to resource for plush drapery and upholstery in both residential and commercial settings.

Pattern Joey passes 200,000 double rubs and pattern Chadwick passes 80,000 double rubs – both suitable for heavy-duty upholstery

Featured: Chadwick 2034, 2732, 4103

Curled Up II

Continued Comfort

Curled Up II is an extensive range of cozy, textured chenilles and sophisticated microfibers in a fresh, new palette. This compilation mixes sumptuous textured chenilles, with tailored microfibers, and an exciting **reversible faux-suede, called Care Free**.

All patterns in "Curled Up II" pass 30,000 to 200,000 double rubs

Featured: Care Free 101, 417 (plus reverse sides)



Performance Wovens Vol. I

Livable Luxury

Performance Wovens offers an eclectic mix of traditional and modern designs paired with complementing textures in a wide array of vibrant colors and sophisticated neutrals. Every fiber in this collection has been infused with either **Alta** or **Crypton Home** to provide permanent stain resistance to last the life of the fabric; it will not wear away. Spills bead up and stains are easy to clean. Performance Wovens crosses over to pass all commercial **ACT** standards making it an ideal choice for upscale hospitality applications.

Every pattern in these collections passes a minimum of 30,000 double rubs and meets all necessary ACT standards to be used for commercial upholstery applications.

Patterns featured: Arabella, Beatty, Check-out, Cynthia, Decoded, Limitless, Milady, Perfect Fit, Tijou



Boathouse

Classic Chameleon

This modern, linen-like texture is a natural choice as base cloth for any room. Matte and multi-toned, it adds laid-back elegance to any contemporary or traditional upholstery piece. Durable and comfortable, Boathouse becomes the piece it is covering.

"Boathouse" passes 60,000 double rubs

Featured: Boathouse 12, 24



State of Grace

Classic Influence

This elegant collection is timeless, yet timely, and embraces the maxim that traditional is the new modern. State of Grace is an assemblage of embossed chenille designs in damask, diamond, stripe and scroll patterns, bringing classic back in a big way.

The range of warm neutrals will be right at home in beautiful old-world interiors, while updated tones of aqua, peridot and smoky plum would provide a shot of color to update traditional interiors.

All patterns pass 65,000-90,000 double rubs

Featured: Colonial 302, Bethrothed 104, 105, Charming 03, Lourdes 206



Featured: High Note 27, Kumbaya 05, Snow Leopard 01

At Ease

Essential Upholstery

At Ease offers a breadth of wonderful heavy-wearing upholstery textures and designs to work throughout an entire home. The interesting mix of multi-colored tweed and textured solids paired with small scale geometric chenilles and gorgeous all-over animal skin designs is a workhorse that can build the foundation for a cohesive interior. This is simply an essential collection for every residential and commercial designer's library.

All patterns pass 25,000-200,000 double rubs



Two's Company

Texture Play

Two's Company is an ultra-contemporary heavy-duty bonded upholstery fabric with a natural linen look. Colors range from neutrals to fashion-forward brights. Its longevity is perfect for a commercial application while still offering a comfortable and natural look.

"Tetra" passes 200,000 double rubs

"Tundra" passes 110,000 double rubs

Featured: Tetra 03, 04, 22, 23



Warrior

Casual Chenille

This beautiful chenille has a fine shaved pile and soft wash finish that creates a casual and relaxed appearance. The slightly distressed look provides texture and movement accompanied by a soft, luxurious hand. Trendy blues offer a punch of color while forest green provides new variety within this sophisticated collection. Warrior is an ideal choice for heavy-duty upholstery in any commercial setting.

"Warrior" passes 40,000 double rubs

Featured: Warrior 16, 17, 24, 26



Velvets

Classic Velvets

More is More

Classic Velvets in an old-world inspired collection of cut-velvet designs perfect for residential and commercial applications. A timeless wide stripe, damask motifs and a stria stripe are shown alongside a more contemporary chevron and geometric. Elegant neutrals play off the saturated European coloring that Maxwell Fabrics is known for.

All patterns pass between 30,000 – 135,000 double rubs for heavy-duty upholstery



Featured: Trinity 606, Vintage Chic 601, San Zeno 605, Venini 607



Featured: Imagination 302, Vector 202, Equinox 102, 105

Modern Velvets

Velvets Gone Vogue

A sleek cut-velvet collection, Modern Velvets features multicolor palettes rich with emerald green, teal blue, magenta and cassia, alongside metal tones. Sophisticated color-coordinated geometrics create a high-end look with heavy abrasion and a soft hand for comfort, durability, and luxe style for residential and commercial applications.

All patterns pass between 50,000 – 180,000 double rubs for heavy-duty upholstery

Performance Velvets Vol. I

Luxe Looks for Real Life

This sophisticated matte-finish velvet is soft and luxurious yet extremely durable and easy to live with. Pattern **Snug** is elevated to super performance status as it has the added benefit of **Alta** permanent soil and stain repellency, making it a versatile choice for residential drapery and upholstery in both residential and commercial settings.

Pattern Snug passes 100,000 double rubs and all ACT standards for heavy-duty upholstery



Featured: Sung 413, 414, 415, 416, 418, 419

Lap of Luxury

Most Wanted

Velvet continues to be a major trend and our Lap of Luxury collection plays to the insatiable demand. This compilation of heavy-duty cotton-look velvet offers a luxuriously soft, supple hand. These elegant velvets are shown with complementary pinstripes and a chic mini-houndstooth, for a plush yet tailored luxury.

All patterns pass 50,000-220,000 double rubs

Featured: Supple 13, 25, 124, 201, 205



Warm Welcome

Right at Home

A collection of modern classic upholstery textures for durable and timeless luxury. Pattern **Wesley** is a chic twill weave with a natural wool look, while pattern **Wyatt** is a textured chenille woven for added contrast and surface interest.

"Wesley" passes 135,000 double rubs

"Wyatt" passes 100,000 double rubs

Featured: Wesley 12, 13, Wyatt 160, 213, 216, 218, 220



Vinyls

Easy Rider II

Evolved Staple

Easy Rider II is a durable selection of vinyl upholstery in a range of natural leather looks and sophisticated yet edgy modern designs. Incorporated into this must-have collection is the introduction of **"Writer's Block" stain-resistant fabrics**. Writer's Block ink-resistant technology offers a unique repel-and-release stain inhibiting system. The dual-action topcoat prevents ink and other stains from setting into the material and allows for easy cleaning even after longer periods of time. With the ability to withstand high dilutions of bleach or isopropyl alcohol, any potential residue can be cleaned off easily. With a soft, supple hand and sophisticated styling these fabrics are perfect for **contract, healthcare, hospitality, education**, and of course all residential applications.

All patterns in "Easy Rider II" pass 50,000 to 500,000 double rubs

Writer's Block patterns: Badlands, Groomed, Pony Express, Side Saddle, Stallion, Tonto



Step 1: Rub the affected area with a dry soft cloth with firm pressure



Step 2: If some stain is still present spray it with 70% Isopropyl Alcohol



Step 3: Wipe clean!



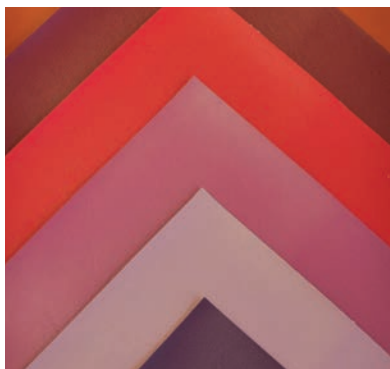
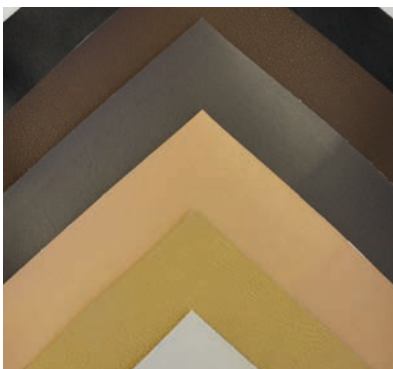
Vinyls I-V

High-Performance Upholstery

This five-book series includes a variety of leather looks with a soft hand and vast color palette suitable for hospitality, healthcare, contract, education and residential applications. All patterns pass 250,000 double rubs and are designed with mildew resistant, anti-bacterial and anti-microbial technology, as well as bleach resistance to withstand the stresses associated with heavy-duty commercial settings.

Please note the following important information:

- All patterns will only be available in full roll increments (approx. 30yd rolls).
- Maxwell Fabrics will not be offering CFA's on this collection, however we will guarantee the dye lot to be within industry standards of the sample book and memo samples.
- We will offer a pre-determined price break at 200 and 500yds. Contact our contract department for more info contract@maxwellfabrics.com.



Drapery

Pure & Simple VI - Satin

Silky Smooth

Pure & Simple is our line of drapery and multi purpose solids and textures. Pure & Simple VI – Satin offers a washable, exclusive FR poly satin aptly named **Silky Smooth** in a range of chic neutrals and classic, useable hues.

Pattern Silky Smooth passes NFPA 701



Featured: Silky Smooth 59, 64, 65

Pure & Simple IV - Faux Silk

Sophisticated Staple

Pure & Simple IV consists of two simply elegant silk-like textures. Pattern **Dryden** is a textured raw silk look that has been yarn-dyed to create a rich, multicolor surface with a soft, drapeable hand. It has the look and feel of natural silk yet offers the practicality and longevity of polyester. Pattern **Orchestra** is an iridescent dupioni-like quality created with a sleek texture and a crisp, drapeable hand. This fabric was created to look like a silk dupioni but with the ease of care inherent to polyester. This compilation of faux silk looks works beautifully for chic residential window applications, but with the benefit of being inherently FR, both patterns are suitable for commercial settings.

All patterns pass NFPA 701 and CAN ULCS109

Featured: Dryden 59, 61, Orchestra 92

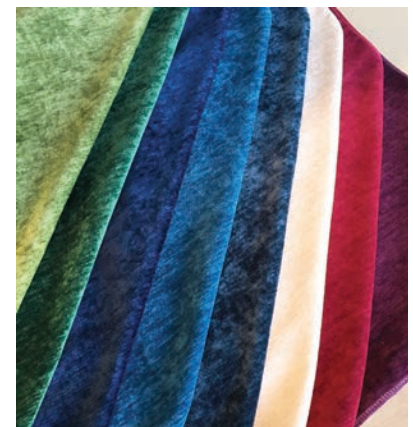


Pattern 'Rave'

Color Theory Vol. II

Drapery velvet pattern **Rave** from Color Theory Vol. II is available with **Alta** to pass **NFPA 701**. Minimum 5 yard order at additional cost. To request Alta contact contract@maxwellfabrics.com. Rave is available in 18 colorways.

Featured: Rave 107, 131, 138, 203, 206, 305, 318, 331, 332



Cottage Home

Dressed-Down Classic

An exclusive collection of woven stripes, textures and checks, uniquely constructed in heavy-duty FR yarns to mimic the look of linen. This essential compilation enables the residential look of modern rustic elegance to cross over into commercial design.

Most skus in "Cottage Home" pass 30,000 double rubs & 8 skus pass NFPA 701

Featured: Pantry 701, Kyack 305, Front Porch 304



Adrift

Shoreline Chic

A casual, relaxed linen-look, Adrift is created using yarn-dyed polyester which prevents creasing while enhancing ease-of-use and care. The subtle weave, dry hand and soft, washed color palette conjure a vintage coastal feeling, perfect for drapery in any room of the house. Adrift is able to evoke the linen-look shabby chic aesthetic, allowing the translation of this breezy style to any commercial project.

"Adrift" passes NFPA 701

Featured: Adrift 22, 29, 32

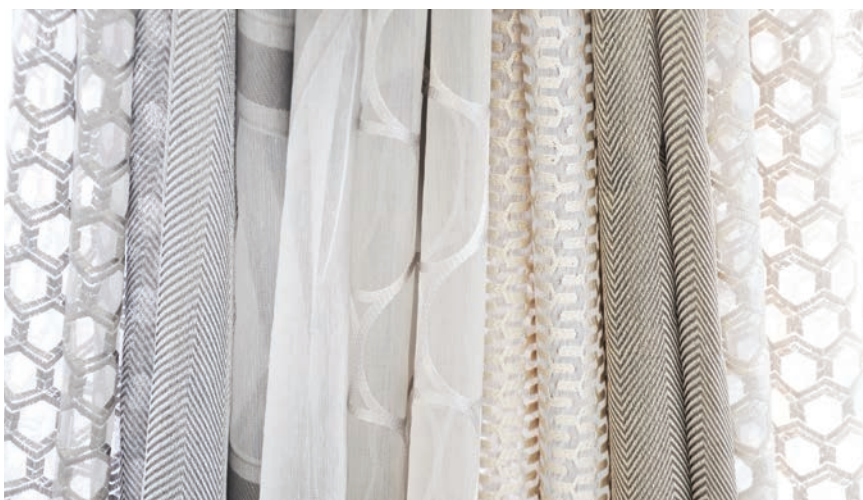
Sheers

Sheer Heaven

Veiled Drama

This chic collection of **118" wide-width sheers** features sophisticated embroidery designs, subtle textures, and tonal stripes in a modern, neutral palette ranging from soft ivory and white to shimmering gold and metallic silver tones. This collection will create a striking statement in any setting, and effortlessly frame any window.

Most patterns in "Sheer Heaven" pass NFPA 701 *Featured: Pillow Talk 23, 106, Halley 306, 309, Pearly Gate 601, Full Moon 09, Constellation 06*



Coming Summer 2017...

Performance Wovens Vol.II

High Performance Meets High Impact Style

Our innovative Performance Wovens series offers a mix of coordinating and complementing upholstery designs, solids and textures stocked with **ALTA** or **Crypton Home** soil and stain repellent technology. Performance Wovens brings residential hand and styling to the realm of commercial upholstery with a performance story. All patterns pass the performance guidelines established by **ACT** for woven upholstery fabrics in high traffic/public spaces, making the collection a perfect choice for high-impact looks in a hospitality setting.

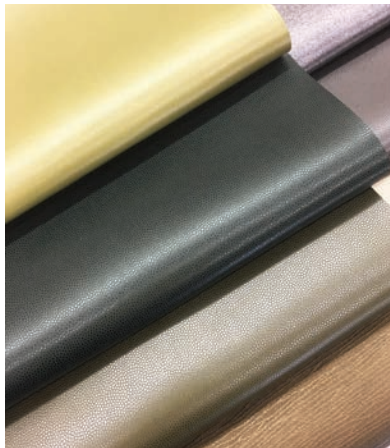
Dragonfruit combines luscious citrus shades like tangelo orange and Meyer lemon yellow with a range of pinks, accented with pops of trendy acid green. Perennially fresh combinations of blue and green make up **Al Fresco**. **Canyon** runs the gamut of warm neutrals from vanilla and camel to vibrant copper. Look to **Shadow & Light** for sleek silvers to deep greys enlivened with fresh yellow accents.



Easy Rider III

Leather Looks to Live By

The next installment in our faux leather series Easy Rider ups the style ante with cool metallic finishes, a touch of sparkle, a slub effect and more. All skus are suitable for commercial application, and the majority are stain-resistant, imbued with either **Writer's Block** or **Sta-Kleen** repel-and-release stain inhibitor.



Super Wide Sheers

Extraordinary Extra-Wides

Super Wide Sheers introduces five use-anywhere sheers in a sought-after **extra-wide 130" width**. The range of constructions, from a delicate batiste to an open casement-like texture, are rendered in a palette of refined, understated neutrals. **All patterns pass NFPA 701** making this an instant staple for commercial projects.



Coming Summer 2017...

Dim Out I

Into the Darkness

Dim Out I is a must-have compilation of washable, NFPA 701 textures in a 98% dimout construction. The soft, touchable hand and dry finish lend this collection a residential sensibility while meeting the specifications required for an array of commercial settings.

All patterns pass NFPA 701



Pure & Simple VII

Texture Play

The latest entry in our drapery solid/texture series, pattern **Darwin** is a perfectly drapeable slubby texture with a subtle hint of sheen for a tussah-like effect. Washable and passing NFPA 701, Darwin is an excellent foundational choice for everything from casual drapery panels to more formal looks.

All patterns pass NFPA 701

EXPRESSIONS IN FABRIC



/maxwellfabrics

Toll Free Tel 1-800-663-1159
Toll Free Fax 1-800-663-6744
fabrics@maxwellfabrics.com
maxwellfabrics.com

Maxwell