



SPRING COLLECTION 2020

Multi-color textural wovens with high performance capability takeover this season as we leave a decade defined by grey.

Maxwell

 @maxwellfabrics

PERFORMANCE TEXTURES

NEWCOMER

UPHOLSTERY



Performance Textures combines five must-have multi-color textural wovens stocked with FibreGuard stain-free technology. Boucle & textured novelty yarns add depth, surface interest & a mid-century aesthetic. The MCM vibe continues with a killer palette ranging from wasabi & martini olive to aqua, with dusk blue keeping things grounded. Shades of ultraviolet & magenta are contemporary & useable alongside dark walnut & carob marled with soft grey.

FibreGuard was developed in Europe to be an easy-clean solution that will last the life of the fabric & perform in commercial projects. FibreGuard focuses on a stain-free cleanability story rather than surface repellency. Spills & soiling are easily removed using a clean cloth, water & mild soap if needed. Visit www.fibreguard.com for how-to videos & cleaning steps for different types of soiling. **Patterns pass 25 – 200K double rubs Wyzenbeek and NFPA 260 CLASS I (UFAC) & CAL 117-2013**

CURLED UP VI

PERFORMANCE

UPHOLSTERY



Curled Up is our upholstery series of plush & comfortable textures & solids. The latest Curled Up has the added benefit of a cleanability performance story. All skus in our latest Curled Up are infused with the trusted stain-free technology of **FibreGuard**.

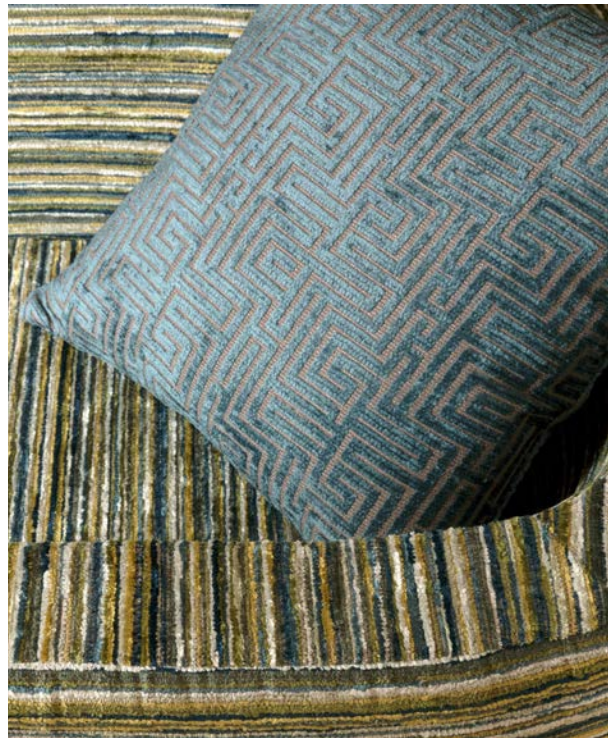
Curled Up VI comprises four ultra-soft printed designs mimicking distressed textures & animal hide looks. Hazy neutrals are set off by rich chartreuse, crimson & Baltic blue.

Patterns pass 30 – 190K double rubs Wyzenbeek and NFPA 260 CLASS I (UFAC) & CAL 117-2013

CLASSIC CHENILLES

PERFORMANCE

UPHOLSTERY



Classic Chenilles merges a **FibreGuard** performance upholstery story with classic motifs in a palette of gem tones & smoky neutrals. Tonal damask, floral & Greek key designs coordinate with a dappled, textural go-with.

Patterns pass 20 – 150K double rubs Wyzenbeek and NFPA 260 CLASS I (UFAC) & CAL 117-2013

HOME & GARDEN ACT V

INDOOR/OUTDOOR

UPHOLSTERY



Home & Garden is Maxwell's series of decorative performance indoor/outdoor fabrics. Act V in the H&G series is a fresh, coastally inspired collection of coordinating textures, plains, stripes & small- to mid-scale designs. The palette focuses heavily on Pantone's color of 2020, Classic Blue, with pops of cerise, citrus & a supporting cast of warm neutrals.

Act V comprises patterns in 100% **Sunbrella** acrylic as well as 100% **Bella-Dura** polyolefin. Both constructions are solution-dyed, bleach cleanable, fade resistant, anti-microbial & come with a five-year limited warranty.

Patterns pass 40 – 100K double rubs Wyzenbeek and NFPA 260 CLASS I (UFAC) & CAL 117-2013

maxwellfabrics.com/collections/spring-2020

WIDE-WIDTH BASICS

NEWCOMER

DRAPERY



Solid & textural wide-width drapery staples in a chic range of neutrals. Of the seven styles in the book, standouts include an ultra-drapeable linen look, Brancusi & a classic twill weave called Indiana. Constructions range from 116" to 121" wide.

Pattern Umberto passes NFPA 701

STUDIO PERFORMANCE

WOOL LOOKS

UPHOLSTERY



Three rich & plush wool looks are rendered in an earthy, muted palette. Stocked with **FibreGuard**, this menswear upholstery collection brings a tailored menswear look into the world of performance.

Patterns pass 20 – 75K double rubs Wyzenbeek and NFPA 260 CLASS I (UFAC) & CAL 117-2013